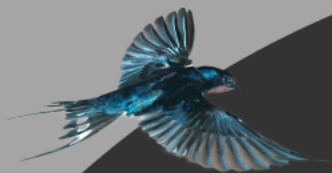


古 TENG Recital Series  
箏 Guzheng

# TRANSCENDENCE 溯箏



## Programme

### Fisherman's Boat At Dusk 《渔舟唱晚》

Performed by Johnny Chia

Arranged by Lou Shu Hua 娄树华

### Jackdaws Frolicking In The Water 《寒鸦戏水》

Arranged by Lian Yong Ser 连荣史

### Fighting Against The Typhoon 《战台风》

Composed by Wang Chang Yuan 王昌元

### Fantasia 《幻想曲》

Performed by Athena Hong

Composed by Wang Jian Min 王建民

### As Thus 《如是》

Performed by Sim Kee, Accompanied by Gabriel Hoe

Composed by Wang Dan Hong 王丹红

### Brilliant 《焕》

Composed by Composed by Chen Yin 陈银 and Zhou Si Yi 周思毅

### Cho 《蝶》

Composed by Hashimoto Migiwa



PRESENTED BY



maple*tree*  
a Corporate Sponsor of The TENG Ensemble

VENUE PARTNER

maple*tree*  
BUSINESS CITY

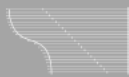


TheTENGCompany



Maple*tree*ArtsintheCity

This event is produced by The TENG Company, at home at the Singapore Chinese Cultural Centre.



古 TENG Recital Series  
箏 Guzheng

# TRANSCENDENCE 溯箏

## Musicians

### The TENG Ensemble

Johnny Chia

Sim Kee

Gabriel Hoe

Joachim Lim

Guzheng

Guzheng

Keyboard

Percussion

### Mapletree-TENG Scholars

Juliette Goh Minzu (2023)

Guzheng

Hong Xin Ying, Athena (2020)

Guzheng

### Performers

Chan Yu Ting

Guzheng

Chen Siyi

Guzheng

Chow Zi Tong

Guzheng

Emma Low Ruiting

Guzheng

Jennifer Jolie Wijaya

Guzheng

Kong Zi Xuan

Guzheng

Teoh Bo Yu

Guzheng

Zhu Jia Hui

Guzheng

## Concert Production

Samantha Tham

Production Manager

Lim Ying Xuan

Stage Manager

Werner Kho

Front-of-House Manager

Jeremy Wong

Front-of-House Manager

Steve Zhang

Technical Manager, Sound Engineer

## Creative Team

Dr Samuel Wong

Creative Director

Johnny Chia

Music Director

PRESENTED BY



maple*tree*  
a Corporate Sponsor of The TENG Ensemble

VENUE PARTNER

maple*tree*  
BUSINESS CITY

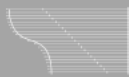


TheTENGCompany



MapletreeArtsintheCity

This event is produced by The TENG Company, at home at the Singapore Chinese Cultural Centre.



古 TENG Recital Series  
箏 Guzheng

# TRANSCENDENCE 溯箏

## Johnny Chia Music Director



Johnny Chia, born and raised in Singapore, is a classically trained guzheng player and Co-Curricular Activity (CCA) instructor in schools. Actively involved in the local art scene, he has also performed with several local Chinese Orchestras and music organizations: Cheng San Community Centre Echoes of The Valley Chinese Orchestra, Braddell Heights Community Centre Chinese Orchestra, Singapore OmniArts, The TENG Ensemble, Guzheng Association (Singapore), Siong Leng Music Association.

Upon graduation from China Music Conservatory, Johnny has been engaged as a music instructor to coach Chinese Orchestra and Guzheng Ensemble CCAs in various schools across Singapore ranging from primary schools to polytechnics. Over the years the schools taught by him have achieved numerous Distinction awards in SYF presentations. Apart from teaching, Johnny has also been working on music projects with various organizations to advocate development for Chinese instrumental music. With The TENG Ensemble, Johnny is engaged as a guzheng player to perform newly rearranged compositions - developed from both classic and traditional Chinese works which feature challenging playing techniques and unprecedented depth at the same time. As Vice President of the Guzheng Association Singapore, Johnny has been planning and directing performance events for the association's members. He also works closely with the association to promote and develop Guzheng Art locally; creating new works for the locally bred art form - a Guzheng Ensemble.

PRESENTED BY



**maple<sup>tree</sup>**  
a Corporate Sponsor of The TENG Ensemble

VENUE PARTNER

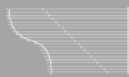


TheTENGCompany



MapleTreeArtsintheCity

This event is produced by The TENG Company, at home at the Singapore Chinese Cultural Centre.



古 TENG Recital Series  
箏 Guzheng

# TRANSCENDENCE 溯箏

## Sim Kee



Sim Kee is a talented Guzheng and percussion player who graduated with honors from the Nanyang Academy of Fine Arts in 2023. She studied under Xu Hui, the Guzheng associate principal of the Singapore Chinese Orchestra (SCO), and Shen Guoqin, a SCO percussionist. During her time at NAFA, she was the principal player for both Guzheng and Chinese percussion.

Sim Kee has a plethora of experiences in the competition scene. She has competed in every rendition of the Singapore Chinese Music Competition since 2018, winning second runner-up in the ensemble category in 2018, first runner-up in the Guzheng senior category in 2020, and first place in the ensemble category in 2022.

In 2023, Sim Kee joined the TENG Company as one of their new musicians. She has since actively performed with them locally and internationally. In the same year, she performed Guzheng concerto "As Thus" for the Singapore National Youth Chinese Orchestra 20th Anniversary Legacy Concert with the SCO. The concerto was well received, earning a high-praised review from The Straits Times. During the same year, she was also awarded the Gold Award at the Nanyang International Music Competition - Chinese Division in the Senior Guzheng category.

Sim Kee has expanded her repertoire across musical genres from traditional Chinese music to pop and contemporary during her time at NAFA, TENG, and the Singapore National Youth Chinese Orchestra.

PRESENTED BY



**maple<sup>tree</sup>**  
a Corporate Sponsor of The TENG Ensemble

VENUE PARTNER



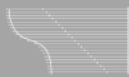
TheTENGCompany



MapleTreeArtsintheCity

This event is produced by The TENG Company, at home at the Singapore Chinese Cultural Centre.





# TRANSCENDENCE 溯箏

## Mapletree-TENG Scholars



Juliette Goh Minzu  
(2023 Scholar)

Juliette has been playing the guzheng for close to a decade starting from when she joined the Guzheng Ensemble in her secondary school. She is currently studying Nursing in the National University of Singapore (NUS).

She has developed a growing passion for performing over the years and that has sustained her interest in the guzheng. While juggling her studies and practicing isn't easy, she believes that her friends and TENG has made the journey more enjoyable. She hopes more people will understand the beauty of the guzheng and Chinese instrumental music.



Hong Xin Ying, Athena  
(2020 Scholar)

From plucking strings to playing intricate melodies, Athena's guzheng journey has been a path of growth and passion. She started learning guzheng in primary school and continued through into Dunman High via the Direct School Admissions (DSA). Through an eight-year journey, the guzheng became not just a hobby, but a soulful companion to Athena.

To Athena, Attaining the Certificate in Professional Performance (Guzheng) was a big achievement and a reminder of how much you can do with music. Through the guzheng, she has found both music and a piece of herself.

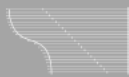
PRESENTED BY



maple*tree*  
a Corporate Sponsor of The TENG Ensemble

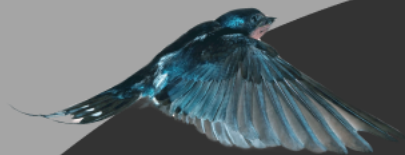
VENUE PARTNER





古 TENG Recital Series  
箏 Guzheng

# TRANSCENDENCE 溯箏



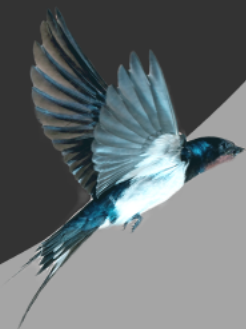
The TENG Company would like to express our sincerest gratitude to Mapletree Investments and all of you, for making this concert possible.

We hope you enjoyed the performance!  
Please complete our feedback form:

<https://bit.ly/GuzhengSurvey>



Find out more about us at  
[www.thetengcompany.com](http://www.thetengcompany.com)



PRESENTED BY

mapletree  
a Corporate Sponsor of The TENG Ensemble

VENUE PARTNER

mapletree  
BUSINESS CITY



TheTENGCompany



MapletreeArtsintheCity

This event is produced by The TENG Company, at home at the Singapore Chinese Cultural Centre.



# EASON MUSIC

CHINESE MUSICAL INSTRUMENTS YOU CAN TRUST  
est. 1978

## OFFICE & REPAIR

114 Lavender Street, CT Hub 2, #02-66 Singapore 338729 [EasonMusicStore.com](http://EasonMusicStore.com)



## RETAIL & LESSONS

2 Kallang Ave, CT Hub Mall, #02-08 Singapore 339407 [EasonMusicSchool.com](http://EasonMusicSchool.com)

FOLLOW US

FOLLOW US

FOLLOW US

FOLLOW US

FOLLOW US



EasonMusic



Eason Music



(65) 6294 7522



FOLLOW US

FOLLOW US

FOLLOW US

FOLLOW US

FOLLOW US



EasonMusicStore



easonmusicsg



(65) 9754 3879